



CORPUS CHRISTI

BONSAI CLUB

E
S
T
·
1
9
7
6

The Corpus Christi Bonsai Club, Inc. was organized in 1976 and is a member of the Lone Star Bonsai Federation, Bonsai Clubs International and The Corpus Christi Area Garden Council Inc. Our club members are passionate about the art of bonsai and we strive to share our knowledge and skills with others. We organize regular meetings, workshops, and exhibitions to foster the love of bonsai in our community.

Meetings are held on the 4th Thursday of each month, January through October, at the South Texas Botanical Gardens. 8545 S. Staples St., Corpus Christi, TX 78413.

2024 Club Officers

President

David Whitaker

1st Vice President

A.J. Guzman

2nd Vice President

Wayne Helgerson

Secretary

Tom Andrews

Treasurer

Betty Whitt

Individual Membership is \$15.00 per year (students \$5.00). Membership for couples is \$20 per year. Dues are pro-rated for persons joining after May. Early payment of dues is appreciated.

SUBMISSIONS

Contact Gilbert Cantu at can2creative@gmail.com or call 361-946-4851 for submissions, articles, comments or suggestions.

JUNE MEETING

THURSDAY, JUNE 27TH - 6:00 P.M.

Club Fundraising Auction
Garden Senior Center (not STBG)



REMINDERS:

- Club merchandise is available thru Gilbert's Little Jade Bonsai website: <https://www.littlejadebonsai.com/online-store>
- July 13th Touring Artist, Mike Lane, will be coming down and working on a beautiful Ficus to be raffled off





**UPCOMING
EVENTS**

JUNE

Thursday, 27th

Membership Meeting at STBG
6:00 p.m. **Club Fundraising
Auction.**

Sunday, 30th

Convention repotting event at
my place in San Patricio starting
at 10am. Members from SABS
and CCBC will be repotting
trees for the 2025 convention
workshops. We'll have pizza for
lunch. Come join the fun! If you
need address and/or directions
send David a text 361.688.0109

JULY

Saturday, 13th

Guest Artist Mike Lane.
Location: Texas Asian Museum

Thursday, 25th

Membership Meeting at STBG
6:00 p.m. **Lecture: Saikei tray
landscapes (Juan).**

Sunday, 28th

1pm - Workshop at STBG. Saikei
techniques with Juan Contreras.

PRESIDENTS MESSAGE

During the May meeting, I covered tips and techniques on caring for bougainvillea, including proper way to defoliation, styling, chops, insect problems, and getting your bougainvillea to bloom for a show. Remember these meetings and workshops are where you learn about tips, tricks and techniques! We have been asked to park in the new parking place behind the Ed. Bldgs. on S. Oso Pkwy.

The June 27th meeting will be held at the Garden Senior Center (not STBG) and will be a fundraiser auction!! Members are encouraged to bring items for the auction, either as a donation or for sale at an 80/20 split. We're also selling club library materials, in bundles and single books (Naka books!). Lots of great books and magazines available, begin your own bonsai library! Sign up when you arrive to receive a bidding number. Any one that would like to assist with the auction is welcome. Bring your auction items and wallet, see y'all June 27, 6pm, at the Garden Senior Center, 5325 Greely Drive, 78412.

Reminder - June 29th is a convention repotting event at my place in San Patricio starting at 10am. Members from SABS and CCBC will be repotting trees for the 2025 convention workshops. We'll have pizza for lunch. Come join the fun! If you need address and/or directions send me a text 361.688.0109

Rescheduled events - No workshop June 30 (see above event). Andy Graham's workshop-L/D on tropicals will not be June 30, instead it will be September 21 at the annual South Texas bonsai kai. Kai theme this year will be "Prepping Your Trees for Showing".

Mike Lane is coming Saturday, July 13th. There will

be a workshop, early afternoon \$25 (BYOT), open to the public also. Lunch break, with L/D late afternoon, members only. Andy Graham has offered up a huge and very nice L/D tree is golden gate/ tiger bark ficus, and will be raffled afterwards at \$5 per ticket or 5 six for \$20. Both events held at the Texas Asian Museum, 1809 N Chaparral, 78401. Mike Lane's lecture / demonstration will be for members only. The Museum will be closed to the public at noon and open only for our event.

Our July 25th meeting, Juan will be giving an L/D on Saikei at the meeting and workshop on Saikei techniques and designs on Sunday 28th at 1pm till done; at South Texas Botanical Gardens educational bldg. Remember these meetings and workshops are where you learn about bonsai tips, tricks, and techniques! Park on the back side of Bldg.

The CCBC Board is looking to create two committees. One is to review and update the club by-laws. The other is for designing and creating the permanent bonsai display at STBG. Please contact any officer or board member if you'd be interested in serving on a committee.

CCBC President
David Whitaker | 361-688-0109



Redhawk
BONSAI

Nursery Floral Class 2 Lic #0822998

DAVID WHITAKER
*Lone Star Bonsai Federation Artist
Lecture-Demos & Workshops*

*South Texas Bonsai Kai Founder
3rd Saturday of September*

San Patricio, Texas
361-688-0109
redhawkbonsai@yahoo.com

Cultivating Bonsai Since 1976





JULY MONTHLY TIPS

Late June / July 2024:

We are near summer solstice as I'm writing this and it is "Tropical Time". We can now start root pruning/repotting our tropicals, if have not started already. It's safe to root prune our tropicals (Bahamas Black Olive, Buttonwood, Sea Hibiscus, Nia Buxifolia, Compache, Gmolina, Premna, Bahama Berry, Fukien Tea, Wrightia.. etc) now through early October, we want at least 4 to 6 weeks of very warm weather after we prune the roots of our tropicals to give the new roots time to establish.

It's also safe to keep on repotting semi-tropicals like ficus and all can be repotted through the mid-summer season. BUT, be cautious during the "summer dormancy" when repotting, it's best to wait during late July through early September. During our summer dormancy season, if you haven't noticed it before, everything shuts down and hardly takes up water, this is when you must watch watering very carefully. I like to wait until mid-September to start back repotting my natives and tropicals again. Down here we can repot semi and tropicals up to early October.



Watch out for the heat of the sun cooking your pots, soil and roots. Covering the edges of your pots with anything you can to keep the heat off them, I use 1x2s and 1x4s cut to the length of the pots. Also check your stands during the heat of the day with your hand to see how hot it is. If it's hot to the touch then it is probably too hot for your bonsai. When this happens then try raising your pots off the benches, here again I use 1x2s or 2 x 2s under the feet to keep them cooler and it allows for better air circulation under the pots too.

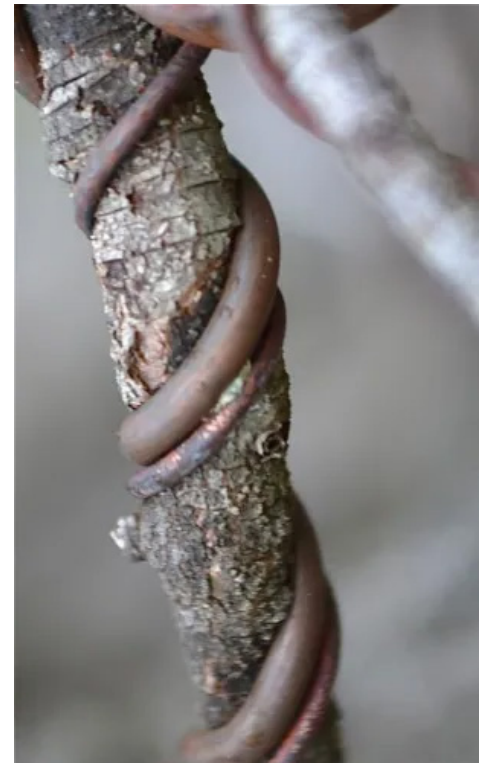
OK I'm going repeat myself over again and again, kind of like when we have fire drills in school, we will be so use to it, it will become second nature to us....Watch the soils every day so they do not dry out. In these dog days of summer the soil can sometimes dry out quicker than 24 hours. I have several plants that need watering 2 times a day and a few that need 3 times. Inspect your bonsai from top to bottom, also inspect the drain holes. If your soil is not drying out daily, there might be something wrong and you should investigate why. Insects are always on the move during the summer. Inspect for ANY and all insects and treat accordingly. If you discover an infestation, treat according to the label of the pesticide.

When inspecting for insects on trees, check all around the bark, foliage or leaves, in-between twigs and in/or under the pot. Spider mites are very tiny bugs (about this size > . <) and will kill your trees before you know that they are there! The best way to find the smallest of the attacking insects (Spider mites) is put you tree over a piece of white paper and tap on all the branches, this will knock off some of the little critters onto the paper, if you can mash/smear the specks, then they need to be eradicated.

Continue to pinch and clip according to species, to develop new branching.

Apply a fungicide and insecticide at least once every 4 weeks.

A fertilization schedule can be continued at this time of year.



Watch your training wires, so they will not cut into the branches. If you need to re-wire after you removed it (because the branch not staying in place) do not put the wire over the same "line", place it over another area of the branch as not to scar the previous wire line.





PROGRESSION SHOTS

