



# CORPUS CHRISTI

**BONSAI CLUB**

EST. 1976

The Corpus Christi Bonsai Club, Inc. was organized in 1976 and is a member of the Lone Star Bonsai Federation, Bonsai Clubs International and The Corpus Christi Area Garden Council Inc. Our club members are passionate about the art of bonsai and we strive to share our knowledge and skills with others. We organize regular meetings, workshops, and exhibitions to foster the love of bonsai in our community.

Meetings are held on the 4th Thursday of each month, January through October, at the South Texas Botanical Gardens. 8545 S. Staples St., Corpus Christi, TX 78413.

### 2024 Club Officers

*President*

David Whitaker

*1st Vice President*

A.J. Guzman

*2nd Vice President*

Wayne Helgerson

*Secretary*

Tom Andrews

*Treasurer*

Betty Whitt

Individual Membership is \$15.00 per year (students \$5.00). Membership for couples is \$20 per year. Dues are pro-rated for persons joining after May. Early payment of dues is appreciated.

### SUBMISSIONS

Contact Gilbert Cantu at [can2creative@gmail.com](mailto:can2creative@gmail.com) or call 361-946-4851 for submissions, articles, comments or suggestions.

## SATURDAY, JULY 13TH - 12PM

# Mike Lane Workshop & Lecture/Demonstration

Texas State Museum of Asian Cultures & Education Center  
1809 N Chaparral St, Corpus Christi, TX 78401



### Touring Artist Event

**Workshop**  
**12pm – 3pm** **\$25**  
*Open to the public* **per person**

**BRING YOUR OWN TREE**

**Lecture demo to follow after workshop for club members only.**

Mike will be working on a beautiful Ficus that will be raffled off.





**UPCOMING  
EVENTS**

**JUNE**

**Thursday, 27th**

Membership Meeting at STBG  
6:00 p.m. **Club Fundraising  
Auction.**

**Sunday, 30th**

Convention repotting event at  
my place in San Patricio starting  
at 10am. Members from SABS  
and CCBC will be repotting  
trees for the 2025 convention  
workshops. We'll have pizza for  
lunch. Come join the fun! If you  
need address and/or directions  
send David a text 361.688.0109

**JULY**

**Saturday, 13th**

**Guest Artist Mike Lane.**  
*Location: Texas Asian Museum*

**Thursday, 25th**

Membership Meeting at STBG  
6:00 p.m. **Lecture: Saikei tray  
landscapes (Juan).**

**Sunday, 28th**

1pm - Workshop at STBG. Saikei  
techniques with Juan Contreras.

**PRESIDENTS MESSAGE**

During the May meeting, I covered tips and techniques on caring for bougainvillea, including proper way to defoliation, styling, chops, insect problems, and getting your bougainvillea to bloom for a show. Remember these meetings and workshops are where you learn about tips, tricks and techniques! We have been asked to park in the new parking place behind the Ed. Bldgs. on S. Oso Pkwy.

Rescheduled events -

No workshop June 30 (see above event). Andy Graham's workshop-L/D on tropicals will not be June 30, instead it will be September 21 at the annual South Texas bonsai kai. Kai theme this year will be "Prepping Your Trees for Showing".

Mike Lane is coming Saturday, July 13th. There will be a workshop, early afternoon \$25 (BYOT), open to the public also. Lunch break, with L/D late afternoon, members only. Andy Graham has offered up a huge and very nice L/D tree is golden gate/ tiger bark ficus, and will be raffled afterwards at \$5 per ticket or 5 tix

for \$20. Both events held at the Texas Asian Museum, 1809 N Chaparral, 78401. Mike Lane's lecture / demonstration will be for members only. The Museum will be closed to the public at noon and open only for our event.

Our July 25th meeting, Juan will be giving an L/D on Saikei at the meeting and workshop on Saikei techniques and designs on Sunday 28th at 1pm till done; at South Texas Botanical Gardens educational bldg. Remember these meetings and workshops are where you learn about bonsai tips, tricks, and techniques! Park on the back side of Bldg.

The CCBC Board is looking to create two committees. One is to review and update the club by-laws. The other is for designing and creating the permanent bonsai display at STBG. Please contact any officer or board member if you'd be interested in serving on a committee.

CCBC President  
**David Whitaker** | 361-688-0109

*Redhawk*  
**BONSAI**



*Cultivating Bonsai Since 1976*

Nursery Floral Class 2 Lic #0822998

**DAVID WHITAKER**

*Lone Star Bonsai Federation Artist  
Lecture-Demos & Workshops*

*South Texas Bonsai Kai Founder  
3rd Saturday of September*

San Patricio, Texas  
**361-688-0109**  
redhawkbonsai@yahoo.com







# Mike Lane

## BONSAI ARTIST

How it began..

I began Bonsai in 2008 after receiving a small juniper as a gift and finding myself fascinated with it. The tree, as most first bonsai do, died and I was left wondering why?

I wanted to try again but on something a bit more substantial. I researched bonsai in my area and was pleased to learn that Wigert's Bonsai Nursery was conveniently located within a 20 minute drive. I met Erik Wigert, and expressed both my admiration and desire to learn this Art from him. Originally I was told that there was no position at the nursery. I decided to essentially show my persistence by taking every class the nursery offered and spending all of my weekends there. One day, during class, Erik approached me and told me to report for duty the following Saturday. That was the beginning...

Since then I have accomplished the following in the Art of Bonsai:

In 2010: I was awarded the sum of \$1000 by the Bonsai Societies of Florida, in their annual styling competition.

With the scholarship money, I traveled to Mexico for the 2010 FELAB convention where I met and learned from artists such as Mauro Stemberger, Min Lo, Robert Steven, Vlad Novak, and Enrique Castano.

In 2011: I was Awarded best Shohin tree, and best Kifu Tree by Pedro Morales at the Annual Wigerts Open house display and critique.



2012: Marked the Year I started teaching, and taught several workshops and demonstrations throughout the state of Florida, as well as teaching individual classes on specific Styles and facets of Bonsai. This was also the year that I began teaching my monthly help session under the Mike Lane Shohin Studio Banner. In 2014: I again did workshops and demonstrations for the Bonsai Society of Southwest Florida, and received the AKAI award in bonsai design and 2nd place best tree for shohin.

Later That Year I was invited to do a program for the Long Island Bonsai Society in New York.

Also in 2014: I had a tree accepted and displayed in the U.S. National Bonsai Exhibition in Rochester New York.

In 2016: I taught demonstrations and workshops at the Bonsai Society of Florida's Annual show, and had the opportunity to work with established

artists Bjorn BJORHOLM and Juan Andrade.

2017-Current: over the last two years I have been deeply dedicated in refining my technique and advancing skills. I will be a featured artist at the Texas State Convention, have been invited back to the Long Island Bonsai society, and have submitted a tree to display again in the National Exhibition in Rochester, New York.

My approach to bonsai is unique in my appreciation of the global distribution of Bonsai and the diverse aesthetics that have become established as bonsai takes its place on the world stage. Essentially, the difference between Japanese Bonsai, and the Bonsai produced around the world.





**JULY MONTHLY TIPS**

Late June / July 2024:

We are near summer solstice as I'm writing this and it is "Tropical Time". We can now start root pruning/repotting our tropicals, if have not started already. It's safe to root prune our tropicals (Bahamas Black Olive, Buttonwood, Sea Hibiscus, Nia Buxifolia, Compache, Gmolina, Premna, Bahama Berry, Fukien Tea, Wrightia.. etc) now through early October, we want at least 4 to 6 weeks of very warm weather after we prune the roots of our tropicals to give the new roots time to establish.

It's also safe to keep on repotting semi-tropicals like ficus and all can be repotted through the mid-summer season. BUT, be cautious during the "summer dormancy" when repotting, it's best to wait during late July through early September. During our summer dormancy season, if you haven't noticed it before, everything shuts down and hardly takes up water, this is when you must watch watering very carefully. I like to wait until mid-September to start back repotting my natives and tropicals again. Down here we can repot semi and tropicals up to early October.



Watch out for the heat of the sun cooking your pots, soil and roots. Covering the edges of your pots with anything you can to keep the heat off them, I use 1x2s and 1x4s cut to the length of the pots. Also check your stands during the heat of the day with your hand to see how hot it is. If it's hot to the touch then it is probably too hot for your bonsai. When this happens then try raising your pots off the benches, here again I use 1x2s or 2 x 2s under the feet to keep them cooler and it allows for better air circulation under the pots too.

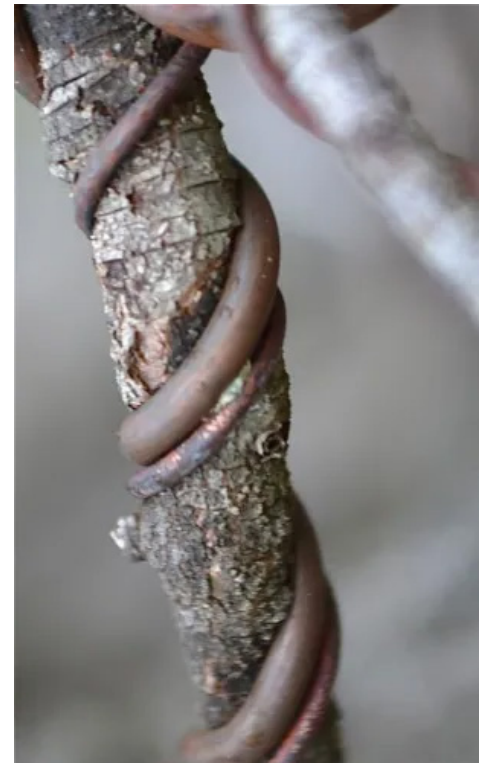
OK I'm going repeat myself over again and again, kind of like when we have fire drills in school, we will be so use to it, it will become second nature to us....Watch the soils every day so they do not dry out. In these dog days of summer the soil can sometimes dry out quicker than 24 hours. I have several plants that need watering 2 times a day and a few that need 3 times. Inspect your bonsai from top to bottom, also inspect the drain holes. If your soil is not drying out daily, there might be something wrong and you should investigate why. Insects are always on the move during the summer. Inspect for ANY and all insects and treat accordingly. If you discover an infestation, treat according to the label of the pesticide.

When inspecting for insects on trees, check all around the bark, foliage or leaves, in-between twigs and in/or under the pot. Spider mites are very tiny bugs (about this size > . <) and will kill your trees before you know that they are there! The best way to find the smallest of the attacking insects (Spider mites) is put you tree over a piece of white paper and tap on all the branches, this will knock off some of the little critters onto the paper, if you can mash/smear the specks, then they need to be eradicated.

Continue to pinch and clip according to species, to develop new branching.

Apply a fungicide and insecticide at least once every 4 weeks.

A fertilization schedule can be continued at this time of year.



Watch your training wires, so they will not cut into the branches. If you need to re-wire after you removed it (because the branch not staying in place) do not put the wire over the same "line" , place it over another area of the branch as not to scar the previous wire line.







PROGRESSION SHOTS



Portulacaria afra progression by Gilbert Cantu



*Raft style dwarf jade forest*

